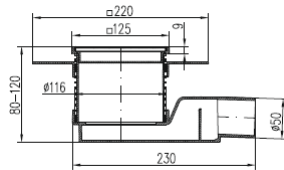
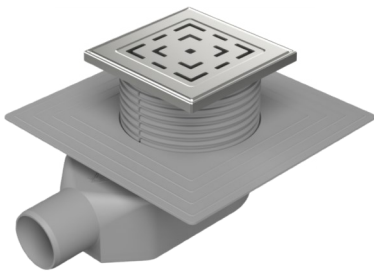
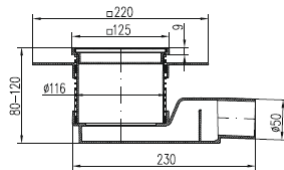
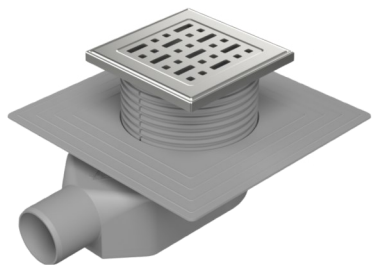


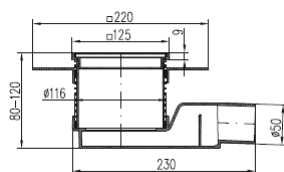
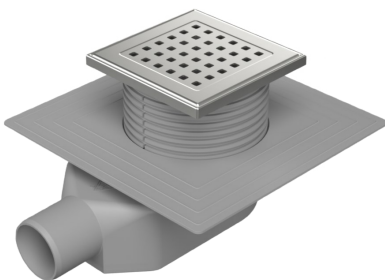
- Fabricado em polipropileno e aço inoxidável
- Descarga horizontal DN50
- Classe de carga: K3 (300 Kg.)
- Resistente a temperaturas até 90°C.
- Capacidade de drenagem: 38-44 l/min
- Aro em aço inoxidável AISI 304 ou em plástico
- Aba para aplicação de tela impermeabilizante
- Vários tipos de grelhas disponíveis
- Testado de acordo com a EN 1253

GRELHA LABIRINTO


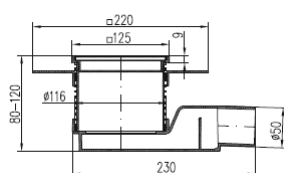
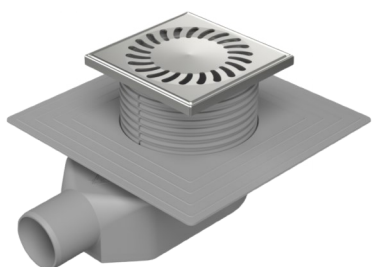
Referência	Peso [Kg]	Aro em aço inoxidável	Grelha [mm]
L1 804	0,70	Não	125 x 125
L1 804 N	0,74	Sim	125 x 125

GRELHA FACE


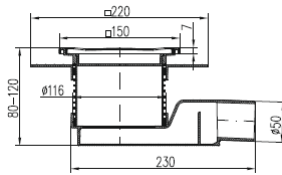
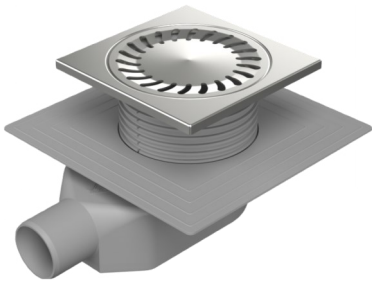
Referência	Peso [Kg]	Aro em aço inoxidável	Grelha [mm]
F1 804	0,70	Não	125 x 125
F1 804 N	0,74	Sim	125 x 125

GRELHA PORTÃO


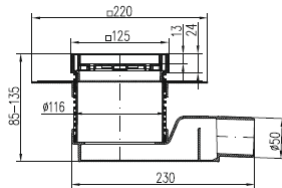
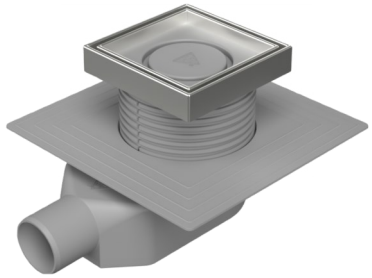
Referência	Peso [Kg]	Aro em aço inoxidável	Grelha [mm]
G1 804	0,70	Não	125 x 125
G1 804 N	0,74	Sim	125 x 125

GRELHA SOL


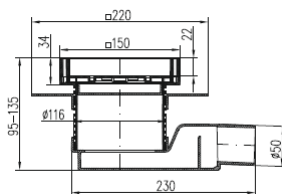
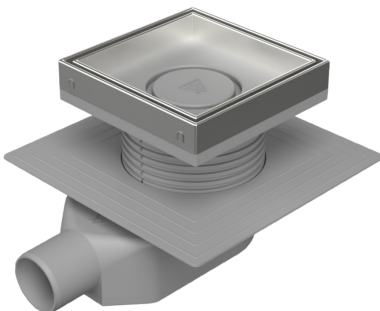
Referência	Peso [Kg]	Aro em aço inoxidável	Grelha [mm]
804	0,70	Não	125 x 125
804 N	0,74	Sim	125 x 125

GRELHA SOL 150X150


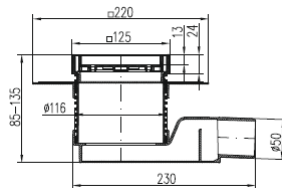
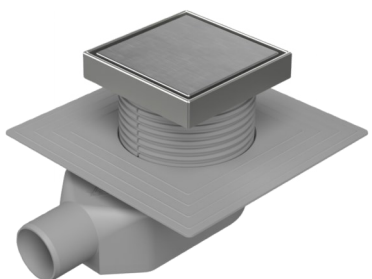
Referência	Peso [Kg]	Aro em aço inoxidável	Grelha [mm]
805	0,79	Sim	150 x 150

GRELHA REBAIXADA


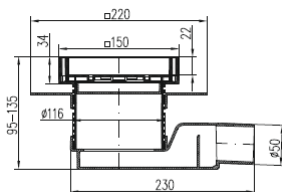
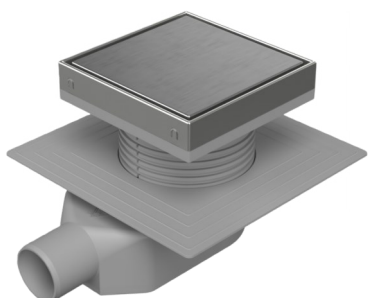
Referência	Peso [Kg]	Aro em aço inoxidável	Grelha [mm]
C 804	0,75	Sim	125 x 125

GRELHA REBAIXADA 150X150


Referência	Peso [Kg]	Aro em aço inoxidável	Grelha [mm]
C1 804	0,98	Sim	150 x 150

GRELHA RANHURADA


Referência	Peso [Kg]	Aro em aço inoxidável	Grelha [mm]
S 804	0,90	Sim	125 x 125

GRELHA RANHURADA 150X150


Referência	Peso [Kg]	Aro em aço inoxidável	Grelha [mm]
S1 804	1,06	Sim	150 x 150